

T Level in Animal Science

Level 3

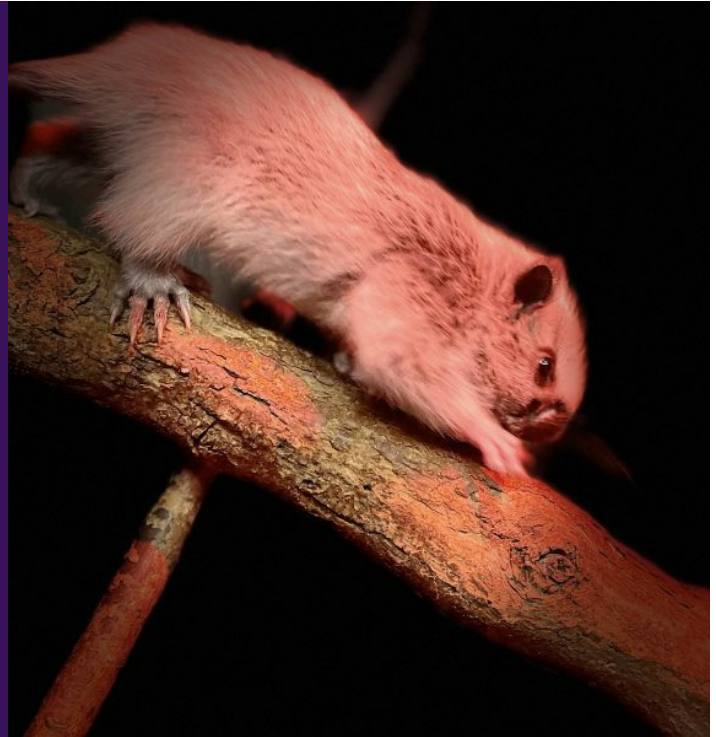
STUDY MODE
Full time

LOCATION
Moulton

LEVEL
Level 3

START DATE
Sept 2025

DURATION
2 years



This advanced study programme is designed to provide an in-depth level of understanding in animal welfare, science and management and aims to support those who want to progress into the animal industry or continue onto higher education to study at degree level.

The course aims to develop confidence, knowledge and skills in an extremely diverse range of animal and science based topics over a two year learning journey which will ensure progression and success in the animal industry.

You will have access to an exciting range of specialist resources at the College, including our amazing Animal Welfare Centre which houses over 130 different domestic and exotic species, including mammals, reptiles, birds, fish, amphibians and invertebrates, with our monkeys and wallabies being amongst the favourites.

What will I learn on the course?

Guided by our expert lecturers you will develop your mindset and career aspirations for working in the animal care industry. You will broaden your knowledge and practical skills in safe working and animal husbandry and attend a wide range of specialist lessons to include in animal health, biology, behaviour & communication, nutrition, animal nursing, animal training, welfare & ethics, breeding & genetics.

Core Content

The element of the course will develop your understanding of a broad range of issues relevant to the sector including:

- sustainability, including environmental legislation, sustainable development, climate change and waste management principles
- the principles of biosecurity
- employment rights and responsibilities and progression opportunities within the sector
- ethical principles
- the supply chain and principles of stock management
- business organisations, enterprise skills and project management
- characteristics protected by equality legislation
- communication
- principles of customer care
- finance
- health and safety
- information and data

Pathway and specialism indicative content

Animal Management & Science

- Anatomy and physiology
- Cells and tissues
- Nutrition
- Animal behaviour
- Research methods
- Genetics
- Evolution
- Conservation
- Animal Health
- Animal husbandry
- Laboratory skills
- Microbiology and biochemistry.

What will this course cost me?

This course is free of charge but you will be required to buy Personal Protective Equipment (PPE) for this course. For a full list of equipment required [click here](#).

What does a typical week look like?

This is a full time study programme consisting of three days of college attendance per week and one day online where you will be learning for half a day and then completing a set task to apply the knowledge you have learnt.

In addition you will also need to complete 315 hours of industry work placement in an external animal related establishment.

The average college day runs from 9am - 4:30pm where there will be a mixture of practical and theory animal care and science lessons, in addition to personal development lessons, tutorial sessions and common core learning.

How will I be assessed?

This vocational qualification is taught through a mixture of college based practical and theory lessons, with further learning and understanding developed via directed self-study. Formative assessments will be set as practice for all externally set assessments, so that you have the chance to practice and receive feedback before you sit the formal assessments.

Assessments are all externally set by City & Guilds T level requirements:

- Common Core Exam
- Core Pathway Exam Animal Behaviour OR Core Pathway Exam Animal Science
- Externally Employer Set Project (work experience based portfolio)
- Externally Set Synoptic Assessment
- Externally Set Research Project
- Externally Set Science Knowledge Test (Animal Science Pathway only)

Where can it lead to?

On successful completion of this course, you could move into employment as a Senior Animal Technician, Lab Technician, Zoo Keeper or Wildlife Conservationist, Animal Behaviourist, Animal Training Specialist, Pet Shop Supervisor/Manager or Trainee Veterinary Nurse.

Students also go on to study at university level either within our own HE facility or at other institutions. Some of our popular degree subject destinations are Animal Behaviour, Zoology, Ecology, Veterinary Nursing, Bioveterinary Science, Veterinary Medicine.

What are the entry requirements for this course?

You must be aged 16 - 18 years old to study a T-Level qualification

- Five GCSEs at grade 9-4 (A*-C) including English and maths and a minimum grade 6 in science, OR
- A Level 2 Technical Diploma with a Distinction grade overall and a Distinction in a Biology & Health Module or science-related subject and GCSEs at grade 4/C or above in English and maths

Good to know

This course is a new course for delivery at Moulton College and is currently going through the approval process.

Visit this course on our website: <https://www.moulton.ac.uk/courses/ptlas/t-level-in-animal-science--level-3>

For further information please contact the college: <https://www.moulton.ac.uk/contact>